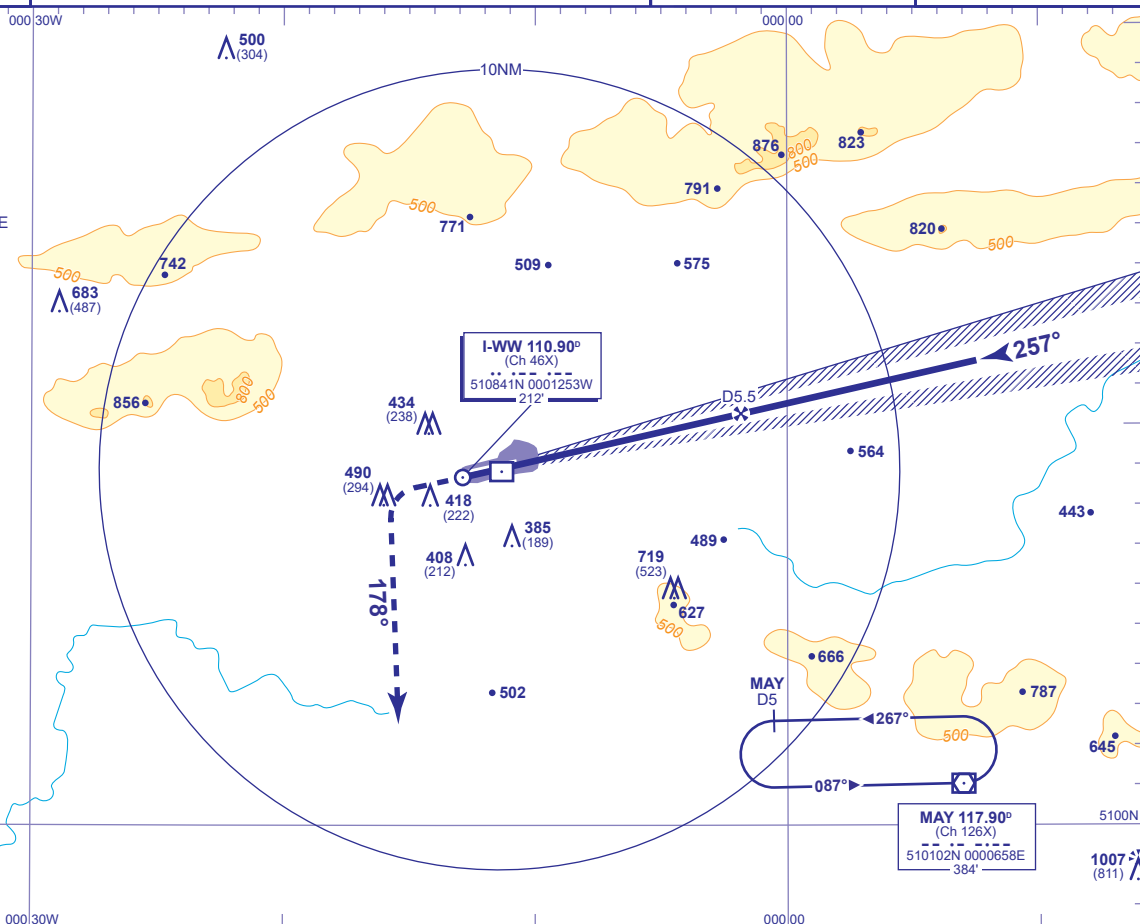


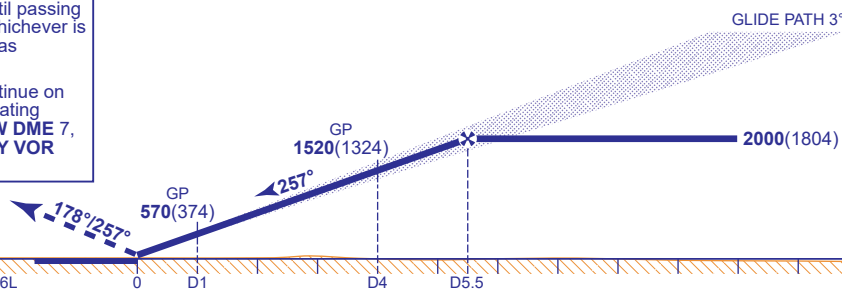
LONDON GATWICK

**ILS/DME
RWY 26L**



DME I-WW	5	4	3	2
ALT(HGT)	1840(1644)	1520(1324)	1200(1004)	880(684)

RCF: Proceed as above, and continue on heading 178°, 2 minutes after initiating missed approach or passing I-WW DME 7, whichever is later, proceed to **MAY VOR** not above **3000**.



Aircraft Category		A	B	C	D	Rate of descent	G/S KT	160	140	120	100	80
OCA (OCH)	CAT I	348(152)	358(162)	374(178)	393(197)		FT/MIN	850	740	640	530	420
	CAT II	269(73)	272(76)	279(83)	295(99)							
VM(C)OCA (OCH AAL)	Total Area	800(597)	800(597)	1020(817)	1120(917)							

Equivalent radar ranges will be provided to the aircraft when established on the localiser, approaching the nominal Final Approach Point and 4NM points.

CHANGE (5/25): VM(C)OCA(OCH AAL) CAT C. OCA(OCH).